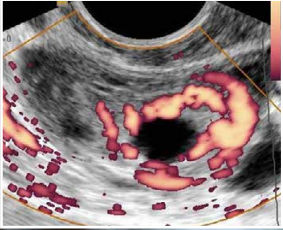
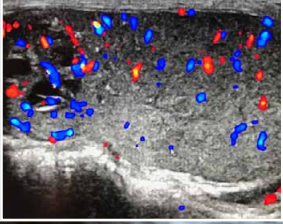
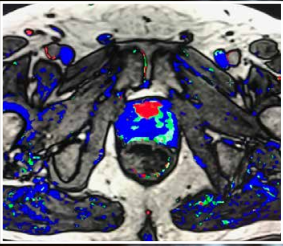


CHANGING MEDICINE.
CHANGING LIVES.®



TOPICS

- Complicated Pregnancies
- Ectopic Pregnancy
- Indeterminate Adnexal Mass
- Fibroid Embolization
- ACR Tools
- Testicular Cancer and Epidemiology
- Heterogeneous Testes
- Prostate Lesions

IOWA RADIOLOGICAL SOCIETY

2017 FALL MEETING

SATURDAY
OCTOBER 21, 2017

MARRIOTT CORALVILLE HOTEL &
CONFERENCE CENTER
300 EAST 9TH STREET
CORALVILLE, IA

Jointly Provided by: The Iowa Radiological Society
and The Department of Radiology, University of Iowa
Roy J. and Lucille A. Carver College of Medicine



UNIVERSITY OF IOWA
CARVER COLLEGE
OF MEDICINE

University of Iowa Health Care

GENERAL INFORMATION

Intended Audience

Academic and community-based radiologists, radiology resident physicians, fellows, and radiology technologists from the state of Iowa.

Purpose

It is our intent that practitioners specializing in imaging will gain increased awareness and knowledge of important topics in genitourinary imaging, overdiagnosis in radiology, improvement of imaging quality, and apply this knowledge to daily clinical work.

Educational Objectives

Upon completion of this program learner should be able to:

- Illustrate use of MRI in complicated pregnancies such as those with placenta accreta.
- Describe the use of MR for the indeterminate adnexal mass.
- Indicate how MRI will be useful before and after fibroid embolization.
- State what is meant by “Medicare Access and Chip Reauthorization Act.”
- Specify how quality measures can be applied to imaging.
- Outline how ACR tools such as registries can aid in demonstrating your practice is continuously working to improve quality.
- Explain epistemic basis of over diagnosis.
- Explain why radiologists are implicated in over diagnosis.
- Outline prescriptions for over diagnosis.
- Describe testicular anatomy and scanning technique.
- Explain newer thoughts on sonography of testicular cancer and epidemiology.
- Outline etiology and significance of heterogeneous testes.
- Outline newest PIRADS version and associated imaging findings.
- Explain MRI US fusion biopsy for prostate lesions.
- Describe and explain critical findings not to miss in 2nd and 3rd trimester ultrasound.
- Identify ectopic pregnancy on ultrasound.

Credit

This activity has been planned and implemented in accordance with the Essential Areas and Policies of the Accreditation Council for Continuing Medical Education (ACCME)

through the joint providership of the University of Iowa Roy J. and Lucille A. Carver College of Medicine and the Iowa Radiological Society. The UI Carver College of medicine is accredited by the ACCME to provide continuing medical education for physicians.

The University of Iowa Carver College of Medicine designates this live activity for a maximum of 5.25 *AMA PRA Category 1 Credits*[™]. Physicians should claim only the credit commensurate with the extent of their participation in the activity.

Registration

The registration fee is \$150 for members of the Iowa Radiological Society and alumni of the College of Medicine’s Department of Radiology. The registration fee for other physicians is \$180. Fellows and Radiology residents in training may attend free of charge with a letter of certification from their director of education. The fee covers registration, instruction, educational materials, refreshments, lunch, and awarding of continuing education credits.

Meeting Location

Marriott Coralville Hotel & Conference Center
300 East 9th Street
Coralville, IA, 52241
TEL: (319) 688-4000

Housing

Participants are responsible for making their own hotel reservations and may do so by contacting the Iowa City/Coralville Area Convention and Visitors Bureau at (800) 283-6592, or any hotel in the Iowa City area including the Coralville Marriott at (319) 688-4000. Rates are not guaranteed.

Parking

Parking is available in garage adjacent to the Coralville Marriott at prevailing rates.

Determination of educational content for this program and the selection of speakers are responsibilities of the program director. Firms providing financial support did not have input in these areas.

DISCLOSURE POLICY: Everyone in a position to control the content of this educational activity will disclose to the CME provider and to attendees all relevant financial relationships with any commercial interest.

FACULTY

Program Faculty

Robert Harris, MD, MPH, FACR

Clinical Professor of Radiology
Division of Body Imaging
University of Iowa Hospitals and Clinics
Iowa City, IA

Saurabh Jha, MBBS, MRCS, MS

Associate Professor of Radiology
Hospital of The University of Pennsylvania
Philadelphia, PA

Anne Kennedy, MB, BCH, BAO

Clinical Professor of Radiology
and Imaging Sciences
Adjunct Professor of Obstetrics/Gynecology
University of Utah Hospital
Salt Lake City, UT

Deborah Levine, MD, FACR

Past Vice President of the American College
of Radiology
Vice Chair of Academic Affairs, Department
of Radiology
Director, Obstetric and Gynecologic Ultrasound
Department of Radiology Beth Israel Deaconess
Medical Center
Boston, MA

Maheen Rajput, MD

Clinical Associate Professor of Radiology -
Division of Body Imaging
Fellowship Program Director, Body Imaging
University of Iowa Hospitals and Clinics
Iowa City, IA

Moderators

Colin J. O'Brien, MD

President and Diagnostic Radiologist
Radiological Medical Services, PC
Coralville, IA

Alan Stolpen, MD, PhD

Associate Professor of Radiology
Division of Body Imaging
University of Iowa Roy J. and Lucille A. Carver
College of Medicine
Iowa City, IA

Iowa Radiological Society Executive Committee

President

Eve Clark, MD

Clinical Associate Professor of Radiology
University of Iowa Roy J. and Lucille A. Carver
College of Medicine
Iowa City, IA
eve-clark@uiowa.edu

Immediate Past President

Larry Burr, MD

Radiology Consultants of Iowa
Cedar Rapids, IA
l.burr@mac.com

President Elect

Colin J. O'Brien, MD

President and Diagnostic Radiologist
Radiological Medical Services, PC
Coralville, IA
colinjobrien@gmail.com

Secretary/Treasurer

Bruno Policeni, MBA, MD

Clinical Associate Professor of Radiology
University of Iowa Roy J. and Lucille A. Carver
College of Medicine
Iowa City, IA
bruno-policeni@uiowa.edu

Program Planning Committee

Catherine Metz, MD, Course Director

Larry Burr, MD

Eve Clark, MD

Prashant Nagpal, MBBS

Colin O'Brien, MD

Bruno Policeni, MD

Alan Stolpen, MD, PhD

Scott Truhlar, MD, FACR

FURTHER INFORMATION:

CONTINUING MEDICAL EDUCATION DIVISION

University of Iowa Carver College of Medicine
100 CMAB
Iowa City IA 52242-1101

Phone: (319) 335-8599 | FAX: (319) 335-8327

Morning Session

Moderators: *Colin J. O'Brien, MD and Alan Stolpen, MD, PhD*

- 7:30 am Registration**
- 7:55 Welcome and Introductory Remarks**
Eve Clark, MD
- 8:00 MIPs and MACRA and How the ACR Can Help You**
Deborah Levine, MD, FACR
- 8:45 Don't miss this! Things to be Wary of on OB Ultrasound**
Anne Kennedy, MB, BCH, BAO
- 9:30 Break**
- 9:45 Solving the Problem Pelvic Ultrasound with MRI**
Deborah Levine, MD, FACR
- 10:30 Overdiagnosis - Facts & Controversies**
Saurabh Jha, MBBS, MRCS, MS
- 11:15 Lunch – Dennis Tibben**
Directory or Government Affairs, Iowa Medical Society

Afternoon Session

Moderators: *Colin J. O'Brien, MD and Alan Stolpen, MD, PhD*

- 12:45 pm Ectopic Pregnancy: Oh the places we can go...**
Anne Kennedy, MB, BCH, BAO
- 1:30 Consumerism and Radiology**
Saurabh Jha, MBBS, MRCS, MS
- 2:15 Break**
- 2:30 Newer Concepts in Testicular Ultrasound**
Robert Harris, MD, MPH, FACR
- 3:15 Applying the Latest PIRADS to Prostate MRI for Fusion Biopsy: How to Build a Collaborative Effort with Your Local Urologists**
Maheen Rajput, MD
- 4:00 Break/CME Program Adjourns**
- 4:15 Iowa State Chapter Business Meeting**
- 5:00 Business Meeting Adjourns**

The University of Iowa prohibits discrimination in employment, educational programs, and activities on the basis of race, creed, color, religion, national origin, age, sex, pregnancy, disability, genetic information, status as a U.S. veteran, service in the U.S. military, sexual orientation, gender identity, associational preferences, or any other classification that deprives the person of consideration as an individual. The university also affirms its commitment to providing equal opportunities and equal access to university facilities. For additional information on nondiscrimination policies, contact the Director, Office of Equal Opportunity and Diversity, the University of Iowa, 202 Jessup Hall, Iowa City, IA, 52242-1316, 319-335-0705 (voice), 319-335-0697 (TDD), diversity@uiowa.edu.

Individuals with disabilities are encouraged to attend all University of Iowa sponsored events. If you are a person with a disability who requires an accommodation in order to participate in this program, please contact the Continuing Medical Education Division in advance at 319-335-8599.

Print clearly Name _____
Address _____
City _____
Degree State/Zip _____
Phone _____
Specialty Business Home
E-mail _____
Company or Business Name _____

For Office Use Only PN: 168670
AMA PRA Category 1 Credits™ _____ CEUs _____

Registration Fees

Member, Iowa Radiological Society (\$150)	\$ _____
Physician Non-member (\$180)	\$ _____
Alumni of UI Dept of Radiology (\$150)	\$ _____
Radiology Technologists (\$85)	\$ _____
Fellows and Residents in training (No charge)	\$ 0 _____
TOTAL	\$ _____

Method of Payment

Payment is required at time of registration. We will not consider you registered until payment is received.

- I have enclosed a check made payable to **The University of Iowa** in the amount of \$ _____
- Please charge registration and tuition fees to my: VISA Master Card Discover


Cardholder Name (please print) _____


Account Number _____


Expiration Date _____ 3-digit security code on back _____


Signature _____

FOUR WAYS TO REGISTER

 University of Iowa Carver College of Medicine
Continuing Medical Education Division
100 Medicine Administration Building
Iowa City, Iowa 52242-1101

 Phone: (319) 335-8599

 FAX registration to:
(319) 335-8327

 Online: www.medicine.uiowa.edu/cme
and click on Upcoming Programs

The University of Iowa requests this information for the purpose of processing your registration. No persons outside the University of Iowa are routinely provided this information.

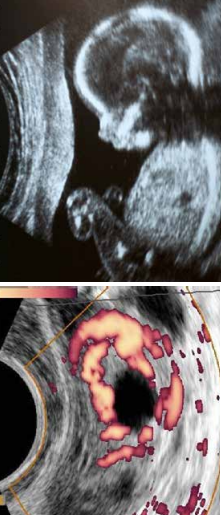
For additional information on this program and other upcoming CME events at the UI Carver College of Medicine, please visit www.medicine.uiowa.edu/cme/.



UNIVERSITY OF IOWA
CARVER COLLEGE
OF MEDICINE

University of Iowa Health Care

Continuing Medical Education
100 Medical Administration Building
Iowa City, Iowa 52242-1101



IOWA RADIOLOGICAL SOCIETY

2017 FALL MEETING

SATURDAY

OCTOBER 21, 2017

MARRIOTT CORALVILLE HOTEL &

CONFERENCE CENTER

300 EAST 9TH STREET

CORALVILLE, IA

